

**Programs & resources provided by:**



Wabaunsee County

**Wabaunsee County Extension**

114 W Third Street, PO Box 278

Alma, KS 66401

**(785) 765-3821**

**[www.wabaunsee.ksu.edu](http://www.wabaunsee.ksu.edu)**

# **Wabaunsee County School Enrichment Program 2025 — 2026**

**Partnerships Include:**

- \* **Pottawatomie-Wabaunsee Regional Library**
- \* **USDA—NRCS, Wabaunsee County**
- \* **Wabaunsee County Conservation District**
- \* **Wabaunsee County Economic Development**
- \* **Wabaunsee County Fair Association**
- \* **Wabaunsee County Resource Council**

**... and more!**

K-State Research and Extension is committed to providing equal opportunity for participation in all programs, services and activities. Program information may be available in languages other than English. Reasonable accommodations for persons with disabilities, including alternative means for communication (e.g., Braille, large print, audio tape, and American Sign Language) may be requested by contacting the event contact Bernadette Trieb two weeks prior to the start of the event at (785) 765-3821 or [btrieb@ksu.edu](mailto:btrieb@ksu.edu). Requests received after this date will be honored when it is feasible to do so. Language access services, such as interpretation or translation of vital information will be provided free of charge to limited English proficient individuals upon request.

**Kansas State University Agricultural Experiment Station and  
Cooperative Extension Service**

K-State Research and Extension is an equal opportunity provider and employer.



**K-STATE**  
Research and Extension



Dear Educators,

We are excited to continue to offer additional school enrichment opportunities for youth in Wabaunsee County schools! School enrichment programs provide additional, hands-on learning to supplement your curriculum. All of our programs will be scheduled on a first-come, first-serve basis. We are committed to providing these educational opportunities to your classroom and will work to find a time that works best for you, while maintaining the mission of Kansas State Research & Extension. To help offset expenses of the cost of materials, our programs may require a small fee per classroom. If the fee will be a deterrence of offering a particular program, please contact us. An invoice will be sent to your school office after we have scheduled your programs. At that time, checks can be made payable to Wabaunsee County Extension Council. If you have questions, please contact the Extension Office, (785) 765-3821.

We look forward to working with you this school year!

**Bernadette Trieb, Agent**

Family & Consumer Sciences  
4-H Youth Development

**Makinna Peterson, Agent**

Agriculture & Natural Resources  
4-H Youth Development

**Stephanie Maike, Staff**

4-H Program Assistant  
Office Professional

Program Request	Fee	Qty	Month Preference
Ants	\$ 10.00/farm		
Beyond Ag	\$ 10.00/semester		
Bread in a Bucket	\$ 20.00/class		
Butterfly Life Cycle	\$ 10.00/class		
Character Development			
Chick Embryology	\$ 10.00/class		
Frog Embryology	\$ 20.00/class		
Hooray for Handwashing	\$ 5.00/class		
MyPlate	\$ 20.00/class		
Reading Makes Cents			
STEM: Coding & Robotics	\$ 10.00/class		

Please complete the form and scan to Stephanie Maike (snmai@ksu.edu).

**\*A fee may be assessed for damaged equipment**

# Classroom Request Form

**Teacher:** \_\_\_\_\_ **Grade:** \_\_\_\_\_

**School:** \_\_\_\_\_

**Phone:** \_\_\_\_\_ **Email:** \_\_\_\_\_

**Billing Address:** \_\_\_\_\_

**Billing Contact & Email:** \_\_\_\_\_

**PO Number for Billing Purposes:** \_\_\_\_\_

KSRE staff are required to report demographics of audiences that attend all Extension programs. Please help us complete our reporting by providing the following information for your students. An evaluation will be included with your program materials. We ask that each participant submits and evaluation to include with our reports.

Enrollment by	Male	Female	Unknown	Total
White				
Black				
Hispanic				
American Indian/ Alaskan Native				
Asian				
Two or more races				
Unknown				
Totals				

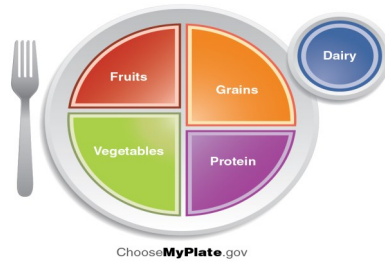
A follow up survey will be sent upon completion of the program. We appreciate any and all feedback you can provide.

**\*A fee may be assessed for damaged equipment**

## MyPlate

Grades K-4

Sit down and learn about the importance of balanced meals. Students will learn about what should be on their plates and try foods they may not typically pick from the menu.



We encourage them to take a Thank You bite to help them become more aware of a variety of foods. Many students realize that they like something after they have had it through this program and then will ask their parents to purchase it to include in their family meals. This will be a staff led program that includes four class sessions.

## Reading Makes Cents

Grades 3-5

Reading Makes Cents is a financial literacy and reading curriculum designed for students in 3rd—5th grade. Financial literacy requires an understanding the critical concepts to lead for a lifetime. This will be staff led program broke out into seven money themes.



## STEM: Coding & Robotics

Grades 2-6

Explore the world of coding through introductory online activities, finishing with hands-on robot testing. Based on the class size, Extension will bring enough robots for each group of three to have their own.

Students must work together with one device to complete the assigned objective. STEM: Coding & Robotics includes DASH robots, squishy circuits, coding wheels, unplugged activities and so much more!

**Extension provides all materials and technology needed. Wifi is required for operation, please request hotspot if Wifi isn't available at program location.**



## Ants

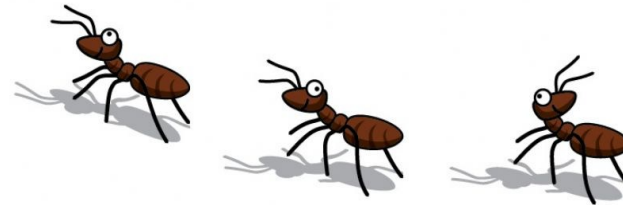
Grades 2-4

Through observing ants within their colony, students will learn about the ants' complex society, the different role each member has and the teamwork they depend on. Additionally the students will also learn about the benefits and problems ants cause in agriculture industry, the home and in nature.

**September & April is the best time to observe Ants in your classroom.**

**Outside temperatures may delay shipping depending on the season. Orders must be placed 30 days prior to month preference requested.**

Includes: Ants, Ant Farm, Worksheets and Observation Journal



## Beyond Ag

Grades K-12

Beyond Ag offers a wide variety of hands on learning opportunities for all ages! These lessons can be built upon each other or used individually. Reach out and find the curricula that aligns with your current class and the state standards.

**Join us on a year long or semester long adventure, exploring various farm to fork opportunities.**

**\*\*Outside temperatures may delay outdoor learning opportunities.**

Includes: Activity Supplies & Curriculum

\$10.00/semester



## Bread in a Bucket

Grades 3-4

Do your students know how bread is made? During this fun, hands on activity students will learn about yeast activation and grain science. Each child will have a mini loaf of bread to take home and one to share.

***An oven must be available for use during the baking time. All other supplies and ingredients will be provided by Extension.***

## Butterfly Life Cycle

Grades K-2

Extension Staff will facilitate a 10—15 minute presentation over what students should expect to see over the next four weeks. During that time, students will assist staff as they set up the habitat and place the caterpillars. Over the next four weeks, students will watch as the larvae turn to adult butterflies.

***April is the best time to observe in your classrooms. Please order at least 30 days prior to your preferred time.***



## Chick Embryology

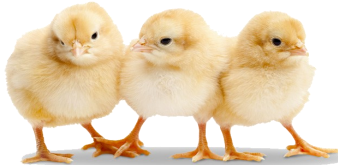
Grades K-4

An exciting experience as students watch chicks hatch. Extension will present a snapshot of what the students should observe over the next 21 days and set the eggs in the incubator.

Eggs will be purchased from a hatchery to insure a greater hatching rate. Chick Embryology is available at any time during the year, but recommended in the Fall or Spring.

***Extension currently has five incubators that will be given on a first come, first serve basis. To ensure your desired time, early scheduling is strongly encouraged. If you have a place for the chicks to go after hatching, great! If not, Extension will assist in chick placement.***

***\*\*Chicks will be sold for a reduced rate to teachers. Chicks not included in the classroom fee.***



## Character Development

Grades K-6, Curriculum based on audience

Character Development is a life skill that is important to build from a younger age. A skill that will be necessary in many facets throughout a student's life-time. We offer a variety of fun, interactive, character development activities to build and grow individuals of all ages.

**Curriculum used, but not limited to:**

- Character Counts
- The Energy Bus
- Mindful Me
- Terrific Teambuilding

Self-Control  
Honesty  
Excellence  
Courteous  
Respect  
Responsibility

## Frog Embryology

Grades 5-8

Watch the tadpoles grow and change into a frog!

This nine week unit allows students to observe the beginning stages of a frog.

***Please allow for the class time to see from tadpole to frog. Offered only in the fall for a full school year lifecycle.***



## Hooray for Handwashing

Grades K-2

Handwashing is one of the best ways to prevent spread of disease and staying healthy. Students will learn the best method and process for washing their hands through a staff led experience. They will get to see how well they wash their hands using a glowing lotion to help them understand the areas that that may need a little more attention.

